

**Offices to Let** +44 (0) 20 3713 1950  
25 - 26 Lime Street, EC3 1,028 – 4,011 Sq ft

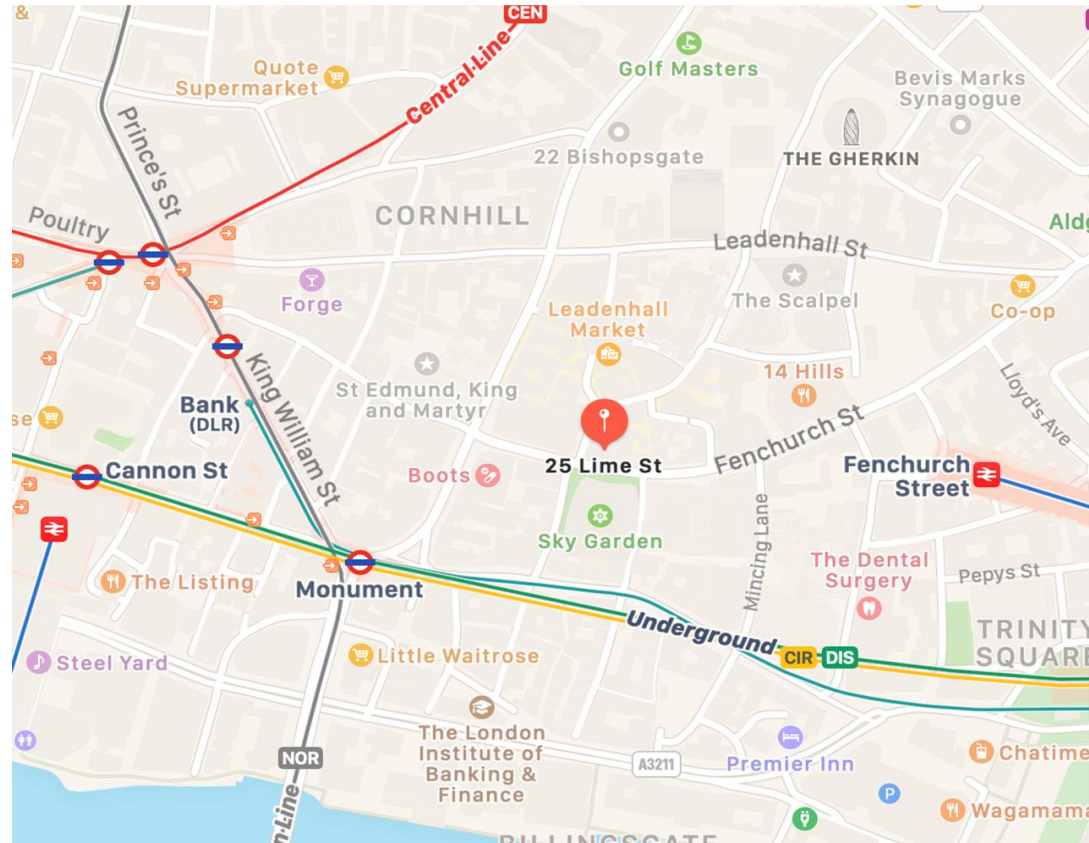


*£25 psf refurbished office space in an excellent location*

**LOCATION**

Situated on the east side of Lime Street, the building enjoys a prominent location in the heart of the Lloyds Triangle within EC3, within the immediate vicinity of Fenchurch Street, Leadenhall Market, and just two minutes walk from Lloyd’s of London and the ‘Walkie Talkie’.

Public transport connections are excellent, with Monument and Bank underground stations, and Fenchurch Street Station, all within 5 minutes’ walk.



**Contact us** bbg real estate london  
1 King Street, London, EC2V 8AU  
[www.bbgregal.com](http://www.bbgregal.com)



Ben Hodder  
+44 7880 242 178  
ben.hodder@bbgregal.com



Jade Henson-Amphlett  
+44 7776 963 575  
Jade.Henson-amphlett@bbgregal.com

Joint Agents:  
Knight Frank  
+44 20 7338 4000



Floor	Sq Ft	Rent Psf	Status
5 <sup>th</sup>	1,217	£25.00	Available
3 <sup>rd</sup>	1,766	£25.00	Available
Ground	1,028	£25.00	Available
<b>Total</b>	<b>4,011</b>		

**LEASE:** The floors are available on new short term leases, outside the security of tenure and compensation provisions of the Landlord and Tenant Act 1954 Part II (as amended), with a Landlord's rolling break option from 25<sup>th</sup> March 2022.

**RENT:** £25.00 per sq ft

**RATES:** £11.85 - £19.43

**S/CHARGE:** £12.53 per sq ft p.a. (20/21 est.)

**VAT:** The property is elected for VAT purposes.

**EPC:** C-51 (Full EPC available on request).

**VIRTUAL TOUR:** Available on request

#### AMENITIES

- Air Conditioning
- Raised Flooring
- Carpeting
- Kitchenette
- Manned Reception
- Suspended ceilings
- Good natural light
- 6 person passenger lift
- 24 hour access / Entry phone system

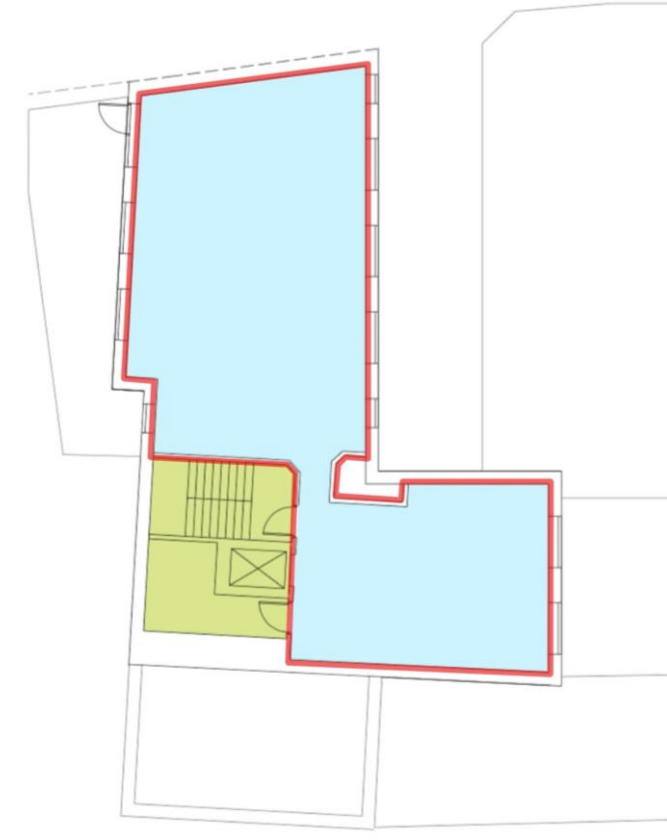
## INDICATIVE FLOOR PLANS



GROUND FLOOR



THIRD FLOOR



FIFTH FLOOR