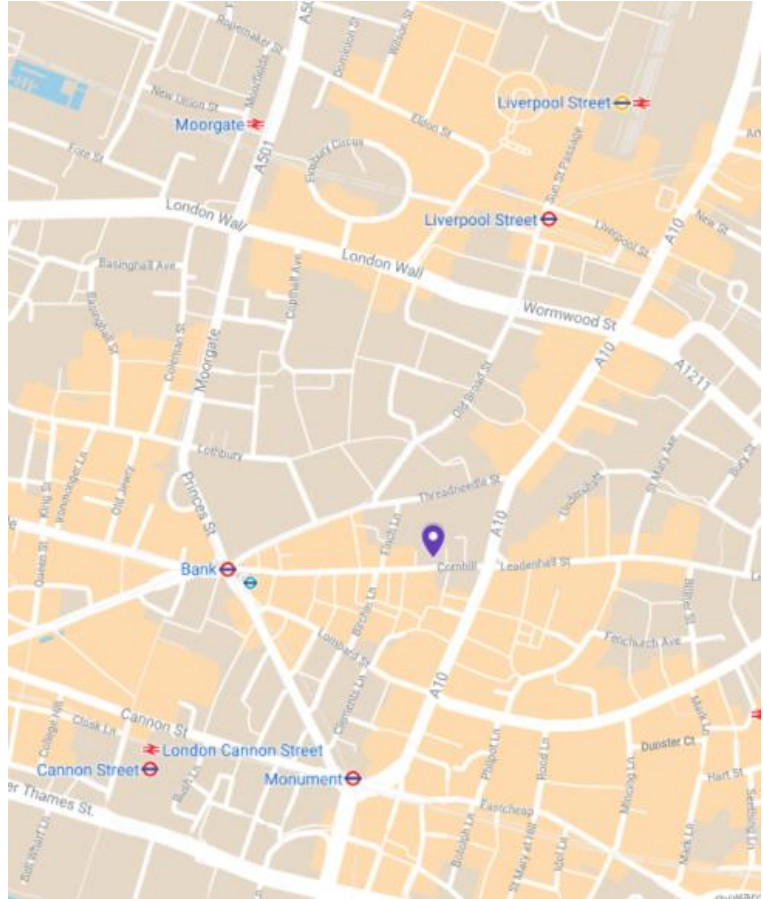




Offices to Let
68 Cornhill, EC3

832 – 2,091 Sq ft

“Refurbished office space in an excellent City location”



Description

68 Cornhill is arranged over lower ground, ground and five upper floors, providing high quality office accommodation with a manned reception.

The mezzanine floor offers a fully fitted plug & play option. The 1st floor has recently undergone refurbishment and now offers a fully cabled open planned space including a kitchenette.

Location

The building occupies a prominent position in the heart of the City, close to the Bank junction, with The Bank of England and the amenities of The Royal Exchange within close proximity.

Bank Station (Central, Circle, District, Northern, Waterloo & City and DLR) is within 5 minutes’ walk and Liverpool Street (Central, Circle, Metropolitan, Hammersmith & City and national rail) and Cannon Street (Circle, District and national rail) are also both within a few minutes’ walk. Transport connections from Liverpool Street will dramatically improve with the opening of Crossrail in 2022.

Contact us bbg real estate advisers



Jade Henson-Amphlett
+44 7776 963 575
Jade.Henson-amphlett@bbgreal.com



Tom Boggis
+44 7795 070 676
tom.boggis@bbgreal.com

Joint Agent: Harry Blanshard
+44 772 173 8337
hblanshard@jamesandrew.co.uk



Floor Areas

FLOOR	SQ FT	STATUS
1st	1,259	Available
Mezzanine	832	Let
Total	2,091	

TERM: New lease on a term to be arranged by the Landlord. Excluding Security of Tenure provisions of the Landlord & Tenant Act 1954, Part 2, as amended.

RENT: 1st Floor: £57.50 per sq ft
Mezzanine Floor: £49.50 per sq ft

RATES: £18.23 per sq ft p.a (22/23 est.)

S/CHARGE: £10.21 per sq ft p.a.

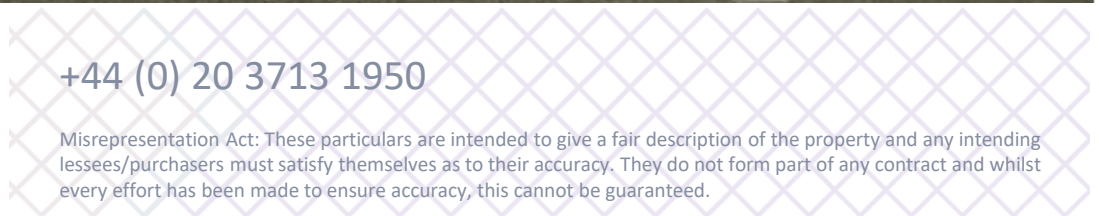
VAT: The property is elected for VAT purposes.

EPC: Full EPC available on request

Amenities

- Mezzanine floor fully fitted
- 1st floor fully refurbished Cat-A
- Air conditioning
- Bike racks
- Showers
- Raised floor
- Suspended ceilings with LED
- Good natural light
- Manned reception

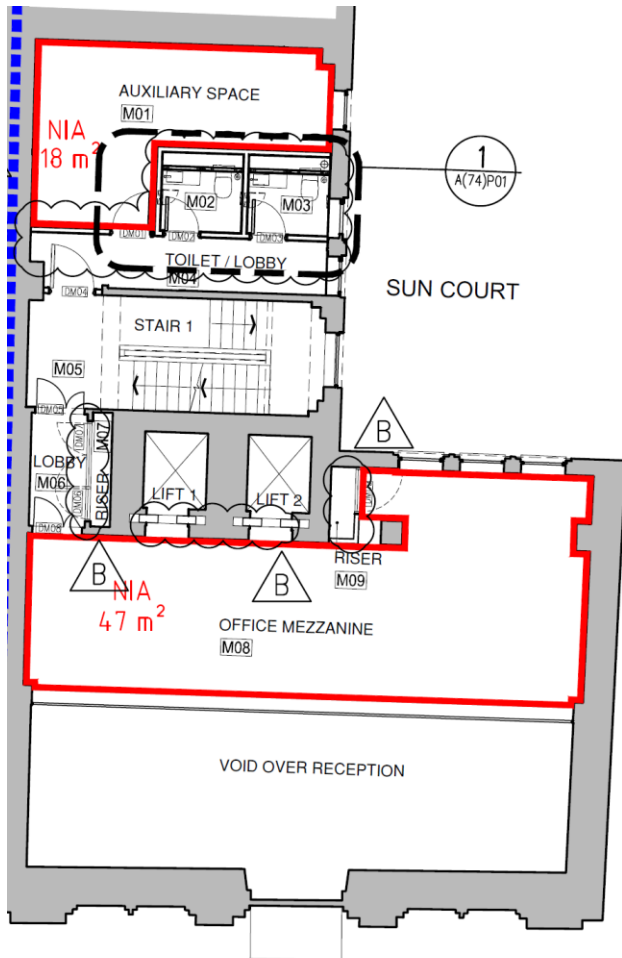






Floor Plans

Mezzanine Floor



1st Floor

