



real estate london

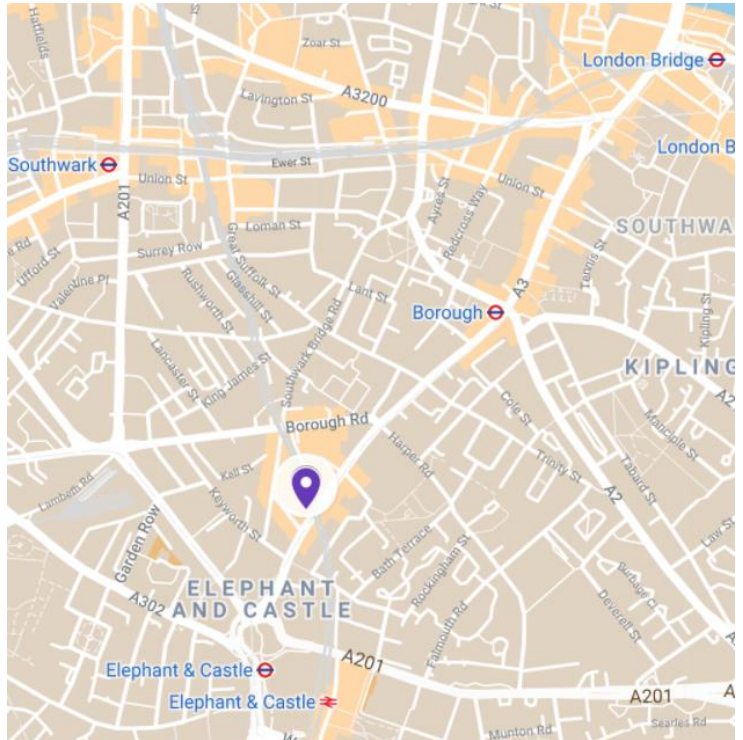
Offices/Storage to Let

64-66 Newington Causeway, SE1



Affordable Self-Contained Office/Storage Space in Elephant & Castle

2,874 Sq ft



Description

The property is arranged over 1st, ground and basement levels. The ground floor is partitioned into 4 meeting rooms of varying sizes including a large boardroom on the front elevation.

The 1st floor has a large open plan area with a small kitchenette and WCs. The 1st floor benefits from good natural light from a large lantern rooflight with retractable blinds.

The basement is suitable for storage purposes.

Location

The property is located on the west side of Newington Causeway, a 2 minute walk from the Elephant & Castle Roundabout.

Elephant & Castle is a highly sought-after residential location and benefits from multiple University campuses and state of the art retail & leisure facilities.

Transport Links are excellent, with easy access to the Northern Line at Elephant & Castle and Borough stations, as well as over ground and Thames Link stations. Bus routes are also excellent in Elephant & Castle.

FLOOR	SQ FT	STATUS
1st	904	Available
Ground	756	Available
Basement	1,214	Available
Total	2,874	



Contact us **BBG Real Estate Advisers**



Tom Boggis
+44 7795 070 676
tom.boggis@bbgreal.com



Jade Henson-Amphlett
+44 7776 963575
jade.henson-amphlett@bbgreal.com

Amenities

- Meeting rooms on ground floor
- 1st floor open plan
- Kitchenette
- Male / Female WCs
- Perimeter trunking throughout
- Excellent natural light
- Highly sought-after location
- Storage space at basement level



TERMS: New lease from the Landlord for a term until September 2024 outside the Landlord and Tenant (1954) Act.

RENT: £15.00 psf

RATES: £12.31 psf

S/C: Nil (self contained)

VAT: No VAT is currently payable on the rent.

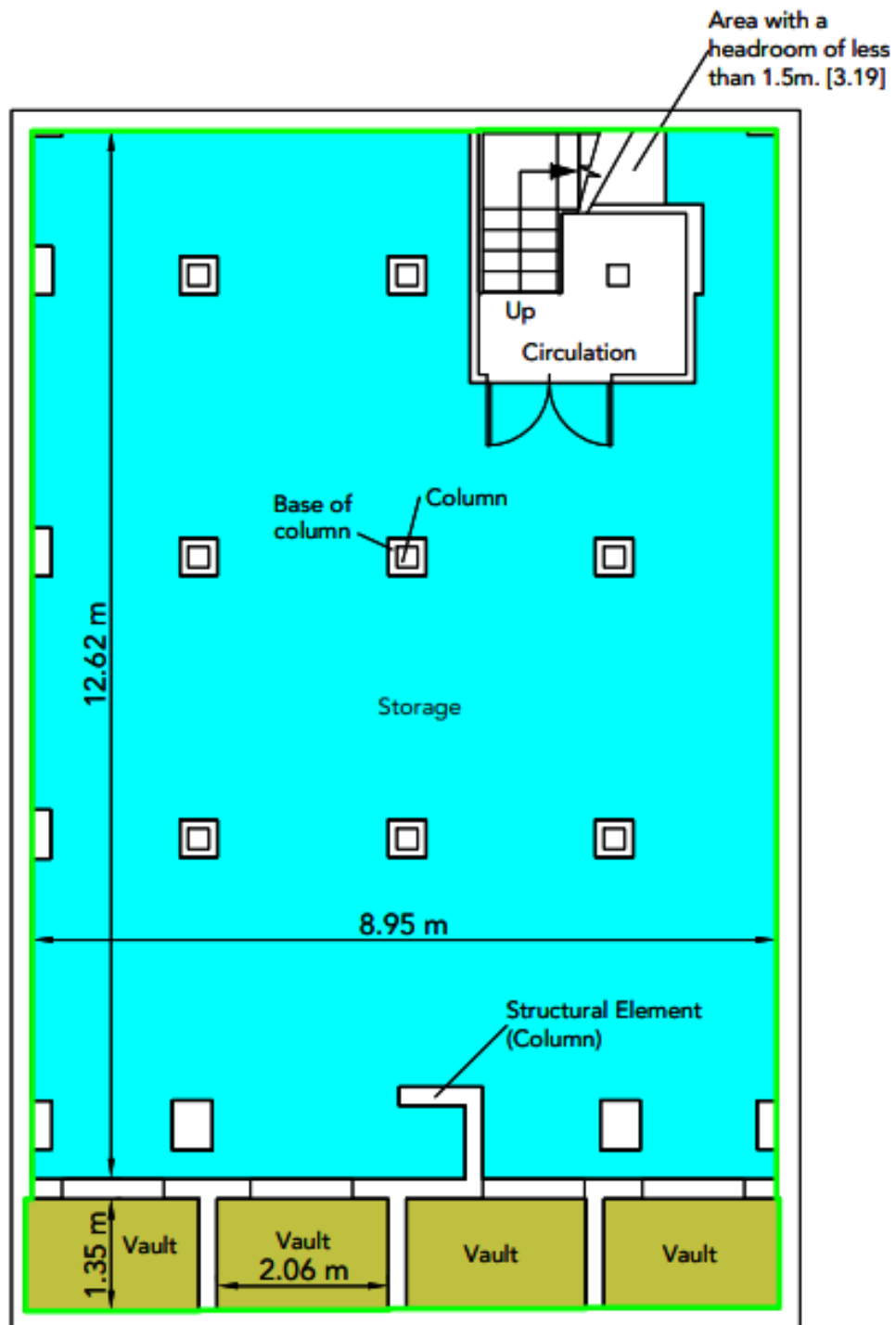
EPC: Full EPC available on request





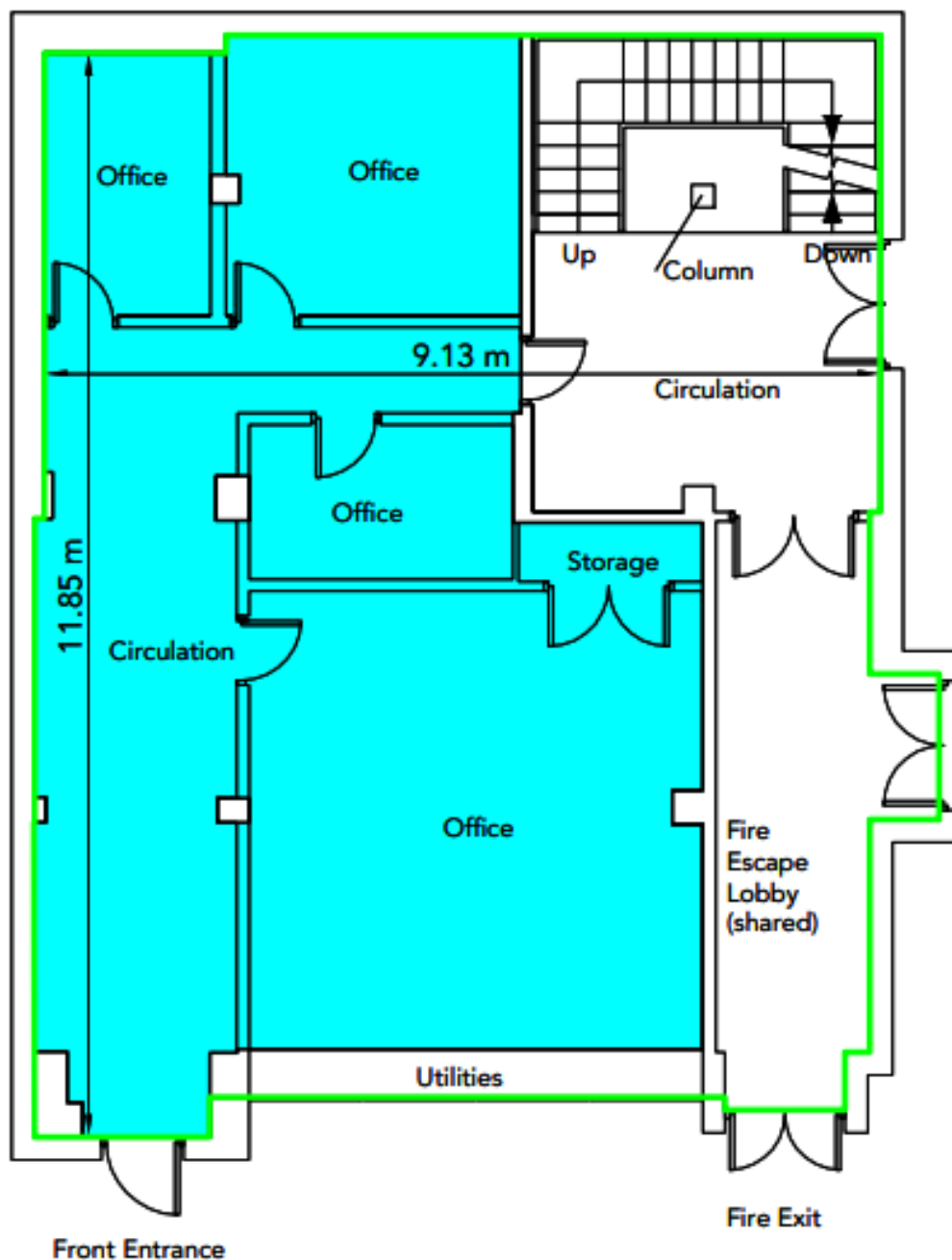
Measured Floor Plan

Basement



Measured Floor Plan

Ground



Measured Floor Plan

1st

